



Ray Files of Bridgelux Vesta 15mm Dim-to-Warm BXRV-DR-1830H-3000-A-13X Products

FTP links to ray files for Bridgelux Dim-to-Warm BXRV-DR-1830H-3000-A-13 Array products can be found in this document. In order to download the ray files, please click on the link.

Note:

- The files are based on testing a single array at a 50°C case temperature and at two different currents: 190mA and 950mA.
- Customers designing on other color SKUs or at other drive or thermal conditions can use these ray files and adjust the LOP level accordingly in their design software.
- All the ray files are generated with 1M rays (IES and EUL format have 10M rays).
- All the rays are generated on a plane at z=0, which is at the center of the top surface of light emitting area. For details about where z=0 is aligned, please refer to the two photos at the end of this file, or read radiant source model in ProSource (under alignment tab).
- Please refer to the 3D CAD files of Dim-to-Warm BXRV-DR-1830H-3000-A-13 from Bridgelux website for mechanical details of the product.

Radiant Source Model with color information

[BXRV-DR-1830H-3000-A-13 at 190mA\(Radiant Imaging Source\)](#)
[BXRV-DR-1830H-3000-A-13 at 950mA\(Radiant Imaging Source\)](#)

Tris-Color:

[BXRV-DR-1830H-3000-A-13 at 190mA\(Generic ASCII Format\)](#)
[BXRV-DR-1830H-3000-A-13 at 190mA\(Generic Binary Format\)](#)
[BXRV-DR-1830H-3000-A-13 at 190mA\(LightTools Binary Format\)](#)
[BXRV-DR-1830H-3000-A-13 at 950mA\(Generic ASCII Format\)](#)
[BXRV-DR-1830H-3000-A-13 at 950mA\(Generic Binary Format\)](#)
[BXRV-DR-1830H-3000-A-13 at 950mA\(LightTools Binary Format\)](#)

Photopic:

[BXRV-DR-1830H-3000-A-13 at 190mA\(ASAP Format\)](#)
[BXRV-DR-1830H-3000-A-13 at 190mA\(ASCII Format\)](#)
[BXRV-DR-1830H-3000-A-13 at 190mA\(FRED Format\)](#)
[BXRV-DR-1830H-3000-A-13 at 190mA\(Generic Binary Format\)](#)
[BXRV-DR-1830H-3000-A-13 at 190mA\(LighTools Format\)](#)
[BXRV-DR-1830H-3000-A-13 at 190mA\(LucidShape Format\)](#)
[BXRV-DR-1830H-3000-A-13 at 190mA\(OptiCAD Format\)](#)
[BXRV-DR-1830H-3000-A-13 at 190mA\(Optis Format\)](#)
[BXRV-DR-1830H-3000-A-13 at 190mA\(Photopia Format\)](#)
[BXRV-DR-1830H-3000-A-13 at 190mA\(SIMULUX Format\)](#)



[BXRV-DR-1830H-3000-A-13 at 190mA\(SPECTER Format\)](#)
[BXRV-DR-1830H-3000-A-13 at 190mA\(TracePro \)](#)
[BXRV-DR-1830H-3000-A-13 at 190mA\(Zemax Format\)](#)
[BXRV-DR-1830H-3000-A-13 at 950mA\(ASAP Format\)](#)
[BXRV-DR-1830H-3000-A-13 at 950mA\(ASCII Format\)](#)
[BXRV-DR-1830H-3000-A-13 at 950mA\(FRED Format\)](#)
[BXRV-DR-1830H-3000-A-13 at 950mA\(Generic Binary Format\)](#)
[BXRV-DR-1830H-3000-A-13 at 950mA\(LighTools Format\)](#)
[BXRV-DR-1830H-3000-A-13 at 950mA\(LucidShpe Format\)](#)
[BXRV-DR-1830H-3000-A-13 at 950mA\(OptiCAD Format\)](#)
[BXRV-DR-1830H-3000-A-13 at 950mA\(Optis Format\)](#)
[BXRV-DR-1830H-3000-A-13 at 950mA\(Photopia Format\)](#)
[BXRV-DR-1830H-3000-A-13 at 950mA\(SIMULUX Format\)](#)
[BXRV-DR-1830H-3000-A-13 at 950mA\(SPECTER Format\)](#)
[BXRV-DR-1830H-3000-A-13 at 950mA\(TracePro \)](#)
[BXRV-DR-1830H-3000-A-13 at 950mA\(Zemax Format\)](#)

Spectral (spectrum adjusted by view angle)

[BXRV-DR-1830H-3000-A-13 at 190mA\(Generic ASCII\)](#)
[BXRV-DR-1830H-3000-A-13 at 190mA\(FRED Binary\)](#)
[BXRV-DR-1830H-3000-A-13 at 190mA\(Generic Binary\)](#)
[BXRV-DR-1830H-3000-A-13 at 190mA\(LightTools Binary\)](#)
[BXRV-DR-1830H-3000-A-13 at 190mA\(OptiCAD\)](#)
[BXRV-DR-1830H-3000-A-13 at 190mA\(Optis Binary\)](#)
[BXRV-DR-1830H-3000-A-13 at 190mA\(Photopia Binary\)](#)
[BXRV-DR-1830H-3000-A-13 at 190mA\(TracePro Binary\)](#)
[BXRV-DR-1830H-3000-A-13 at 190mA\(Zemax Binary\)](#)
[BXRV-DR-1830H-3000-A-13 at 950mA\(Generic ASCII\)](#)
[BXRV-DR-1830H-3000-A-13 at 950mA\(FRED Binary\)](#)
[BXRV-DR-1830H-3000-A-13 at 950mA\(Generic Binary\)](#)
[BXRV-DR-1830H-3000-A-13 at 950mA\(LightTools Binary\)](#)
[BXRV-DR-1830H-3000-A-13 at 950mA\(OptiCAD\)](#)
[BXRV-DR-1830H-3000-A-13 at 950mA\(Optis Binary\)](#)
[BXRV-DR-1830H-3000-A-13 at 950mA\(Photopia Binary\)](#)
[BXRV-DR-1830H-3000-A-13 at 950mA\(TracePro Binary\)](#)
[BXRV-DR-1830H-3000-A-13 at 950mA\(Zemax Binary\)](#)



Spectral (spectrum adjusted by emission location)

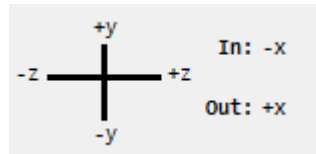
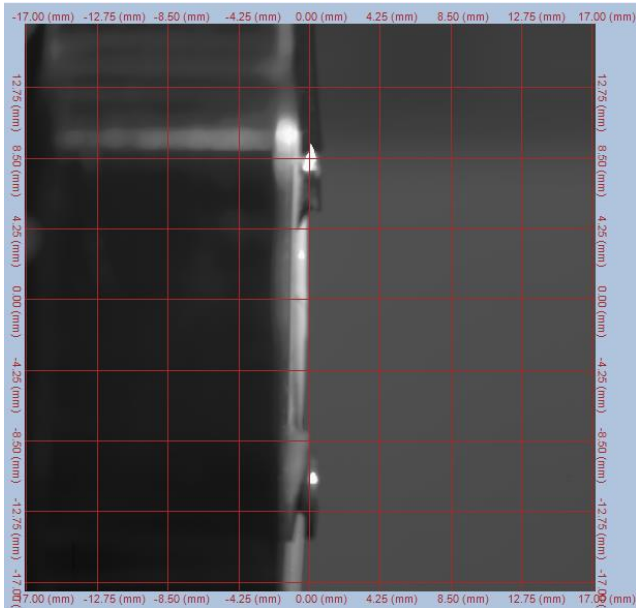
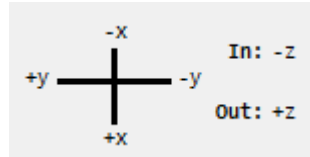
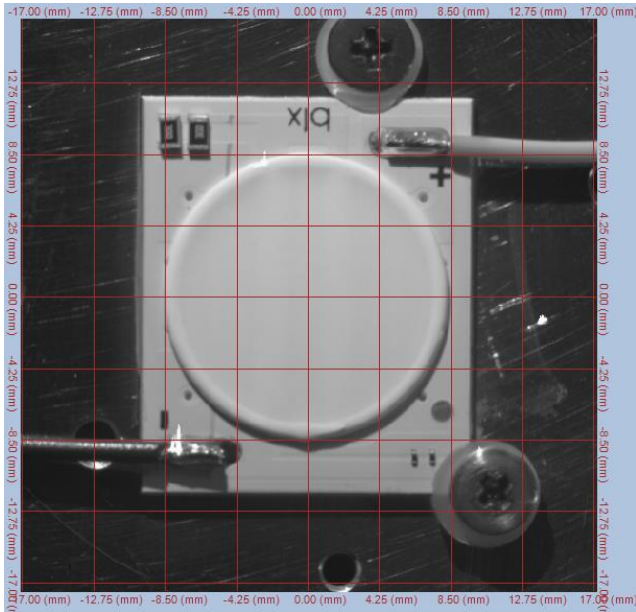
[BXRV-DR-1830H-3000-A-13 at 190mA\(Generic ASCII\)](#)
[BXRV-DR-1830H-3000-A-13 at 190mA\(FRED Binary\)](#)
[BXRV-DR-1830H-3000-A-13 at 190mA\(Generic Binary\)](#)
[BXRV-DR-1830H-3000-A-13 at 190mA\(LightTools Binary\)](#)
[BXRV-DR-1830H-3000-A-13 at 190mA\(OptiCAD\)](#)
[BXRV-DR-1830H-3000-A-13 at 190mA\(Optis Binary\)](#)
[BXRV-DR-1830H-3000-A-13 at 190mA\(Photopia Binary\)](#)
[BXRV-DR-1830H-3000-A-13 at 190mA\(TracePro Binary\)](#)
[BXRV-DR-1830H-3000-A-13 at 190mA\(Zemax Binary\)](#)
[BXRV-DR-1830H-3000-A-13 at 950mA\(Generic ASCII\)](#)
[BXRV-DR-1830H-3000-A-13 at 950mA\(FRED Binary\)](#)
[BXRV-DR-1830H-3000-A-13 at 950mA\(Generic Binary\)](#)
[BXRV-DR-1830H-3000-A-13 at 950mA\(LightTools Binary\)](#)
[BXRV-DR-1830H-3000-A-13 at 950mA\(OptiCAD\)](#)
[BXRV-DR-1830H-3000-A-13 at 950mA\(Optis Binary\)](#)
[BXRV-DR-1830H-3000-A-13 at 950mA\(Photopia Binary\)](#)
[BXRV-DR-1830H-3000-A-13 at 950mA\(TracePro Binary\)](#)
[BXRV-DR-1830H-3000-A-13 at 950mA\(Zemax Binary\)](#)

EUL and IES files:

[BXRV-DR-1830H-3000-A-13 at 190mA\(EULUMDAT Format\)](#)
[BXRV-DR-1830H-3000-A-13 at 190mA\(IES Format\)](#)
[BXRV-DR-1830H-3000-A-13 at 950mA\(EULUMDAT Format\)](#)
[BXRV-DR-1830H-3000-A-13 at 950mA\(IES Format\)](#)

Alignment during radiant source model and ray file generation

190mA:



950mA:

